



MONTHLY MEMBERSHIP PROGRESS REPORT

District C 2

Results as of: 06/30/2019

GMT: GORDON ZIEGLER

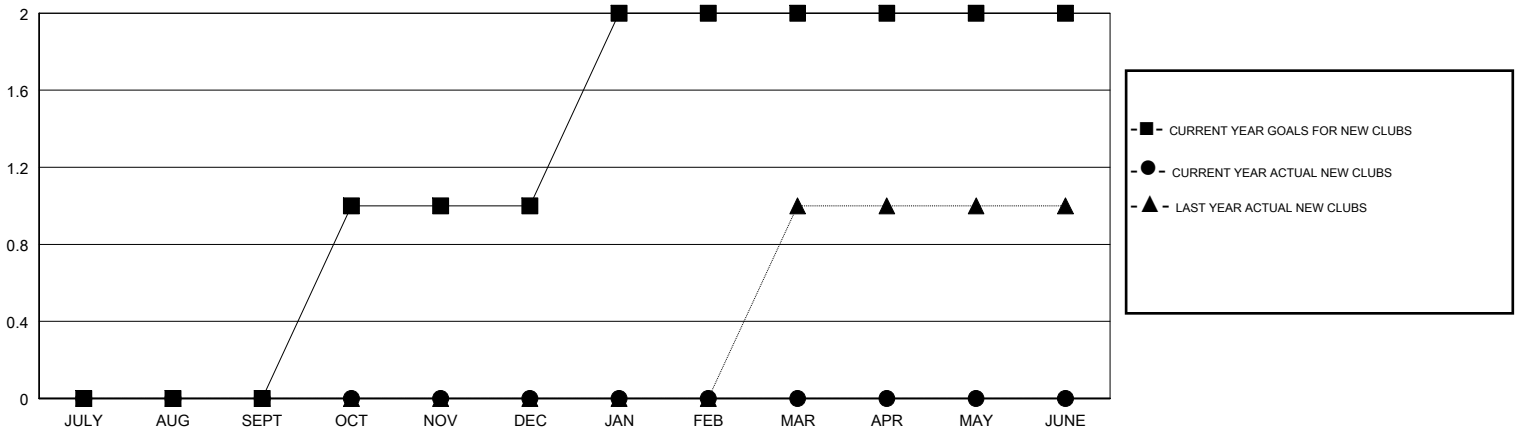
LOCATION ALBERTA

GMT CA

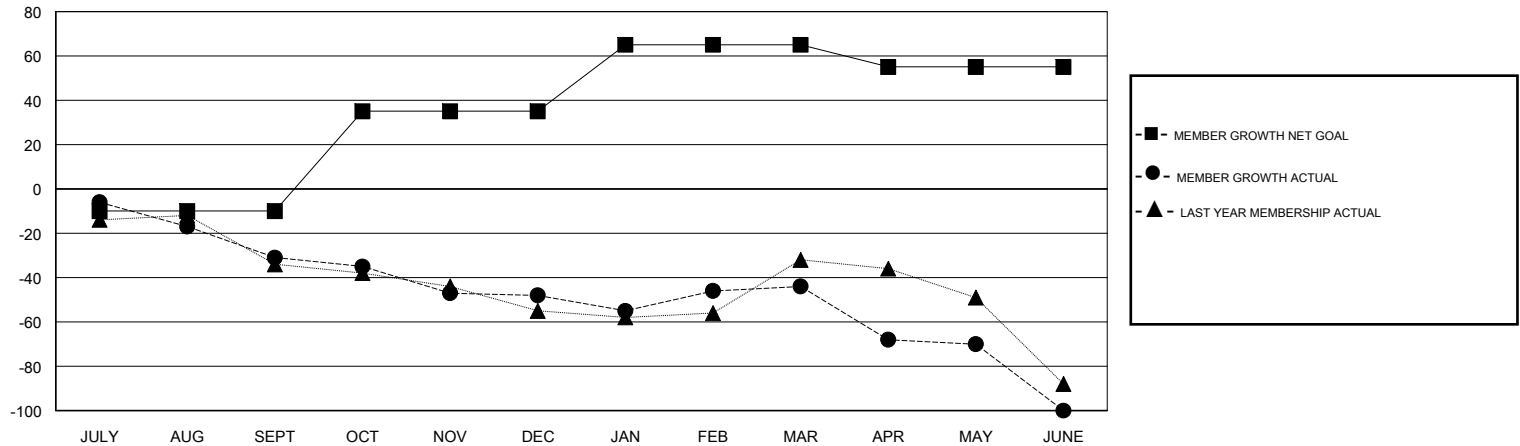
Clubs			
RESULTS FOR 2018-2019			
QUARTER	NEW CLUB GOAL	NEW CLUBS	DROPPED CLUBS
JULY/AUG/SEPT	0	0	0
OCT/NOV/DEC	1	0	0
JAN/FEB/MAR	1	0	0
APR/MAY/JUNE	0	0	1

Members			
RESULTS FOR 2018-2019			
QUARTER	MEMBER GROWTH NET GOAL	MEMBER GROWTH ACTUAL	DROPPED MEMBERS ACTUAL (including transfers)
JULY/AUG/SEPT	-10	26	54
OCT/NOV/DEC	45	45	56
JAN/FEB/MAR	30	67	51
APR/MAY/JUNE	-10	35	88

GOALS AND ACTUAL NEW CLUBS CUMULATIVE



GOALS AND ACTUAL MEMBERS CUMULATIVE



DROPPED CLUBS: 1	53 CLUBS OF 90 ADDED 1 OR MORE NEW MEMBERS	<u>GENDER DISTRIBUTION</u>	
DROPPED MEMBERS		MALE	1,526 (74.40%)
DECEASED	35	FEMALE	525 (25.60%)
CLUB CANCELLED	27	Women Percentage Fiscal Year Goal: 30%	
OTHER	187	TOTAL FAMILY UNIT MEMBERS	302
TOTAL	249	FAMILY MEMBERS PAYING HALF DUES	154

[CLICK HERE FOR CUMULATIVE MEMBERSHIP DATA](#)